

Appendix A. Drawings

Inches [mm]

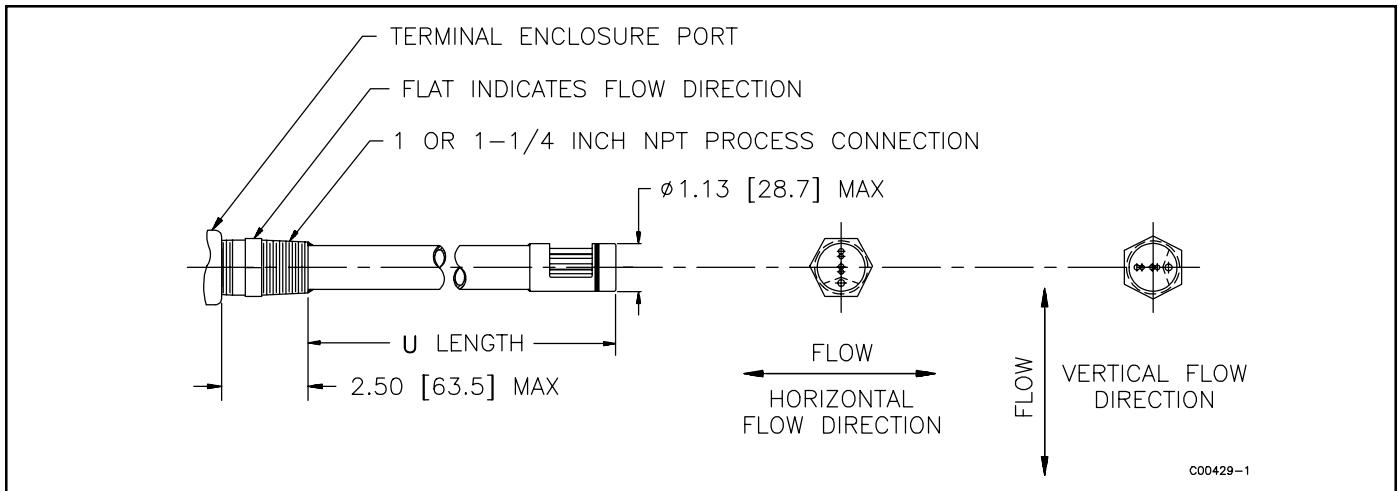


Figure A-1. GF90 1 or 1-1/4 Inch NPT Flow Element

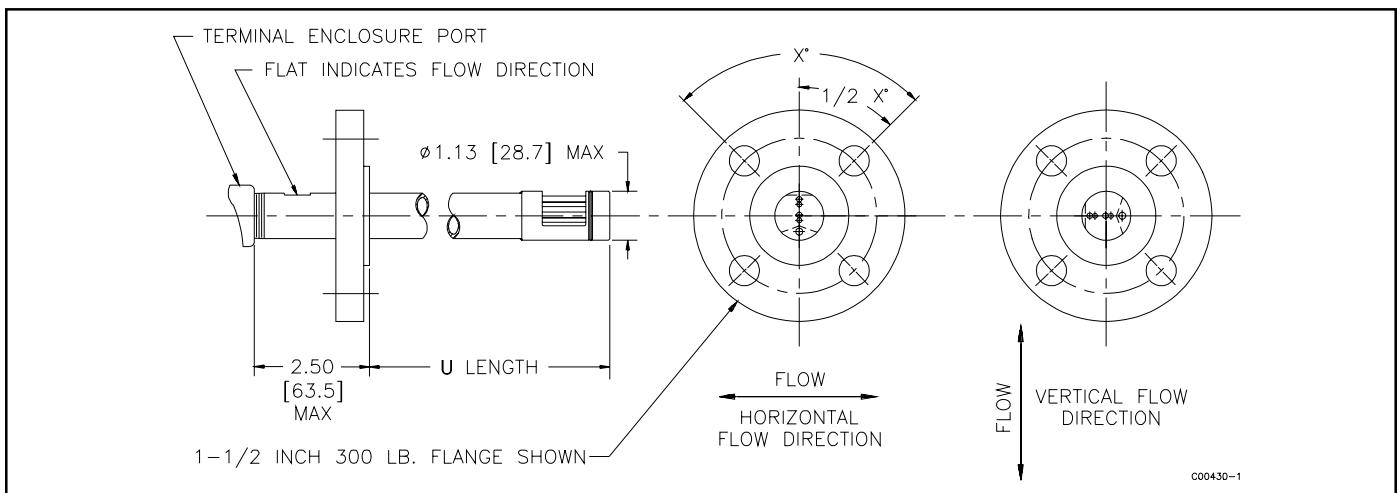


Figure A-2. GF90 Flanged Flow Element

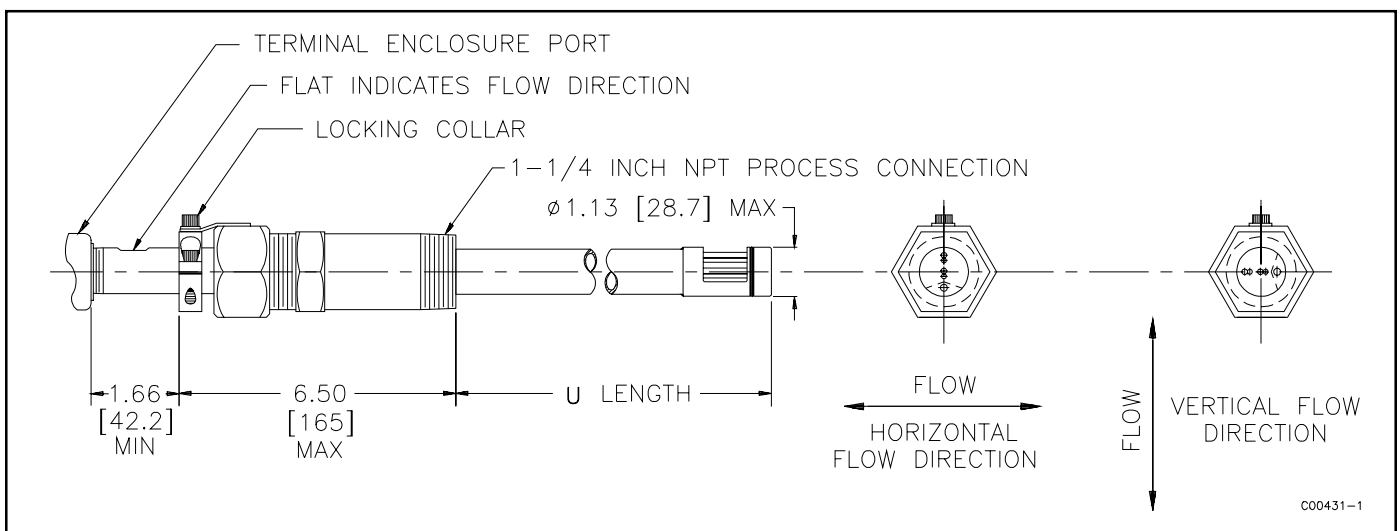


Figure A-3. GF90 1-1/4 Inch NPT Low Pressure Packing Gland Flow Element

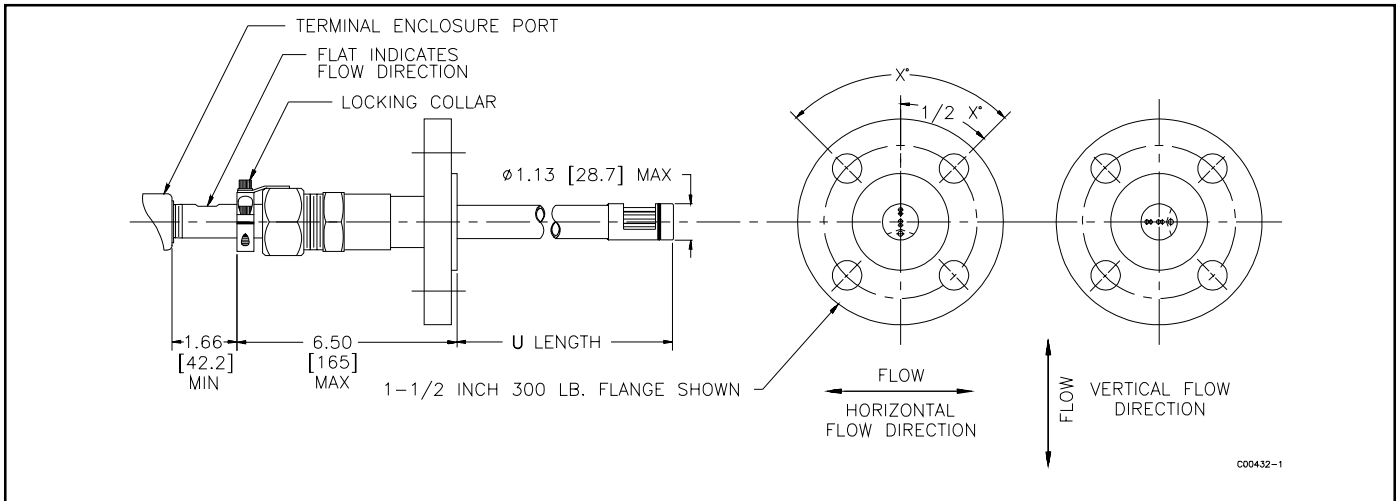


Figure A-4. GF90 Flanged Low Pressure Packing Gland Flow Element

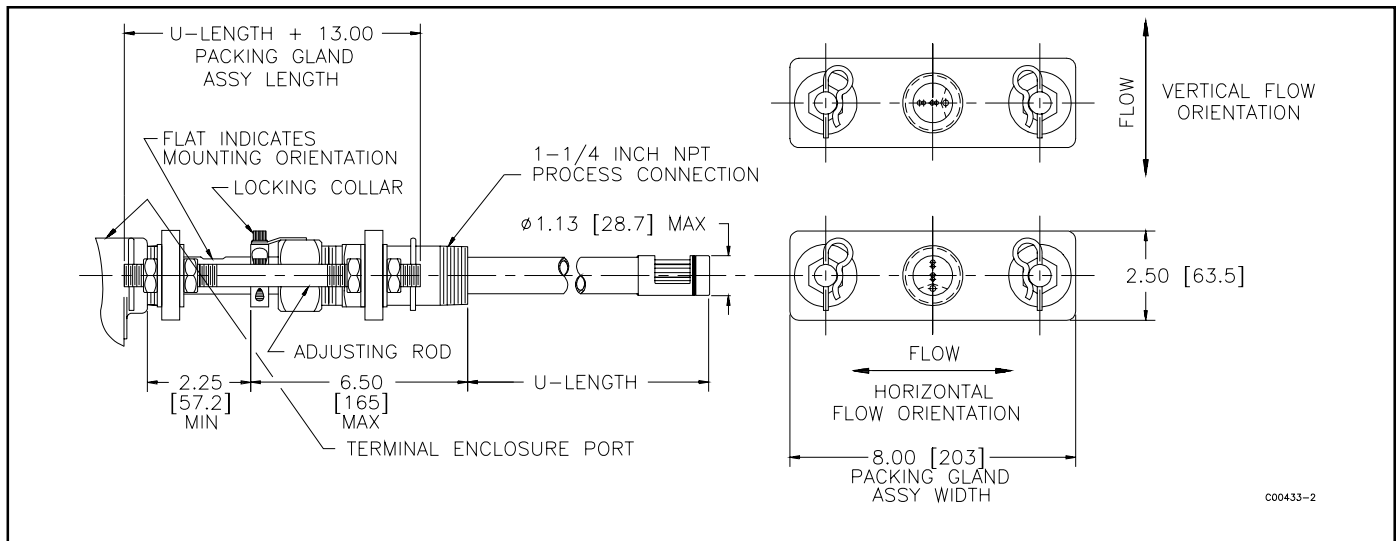


Figure A-5. GF90 1-1/4 Inch Medium Pressure Packing Gland Flow Element

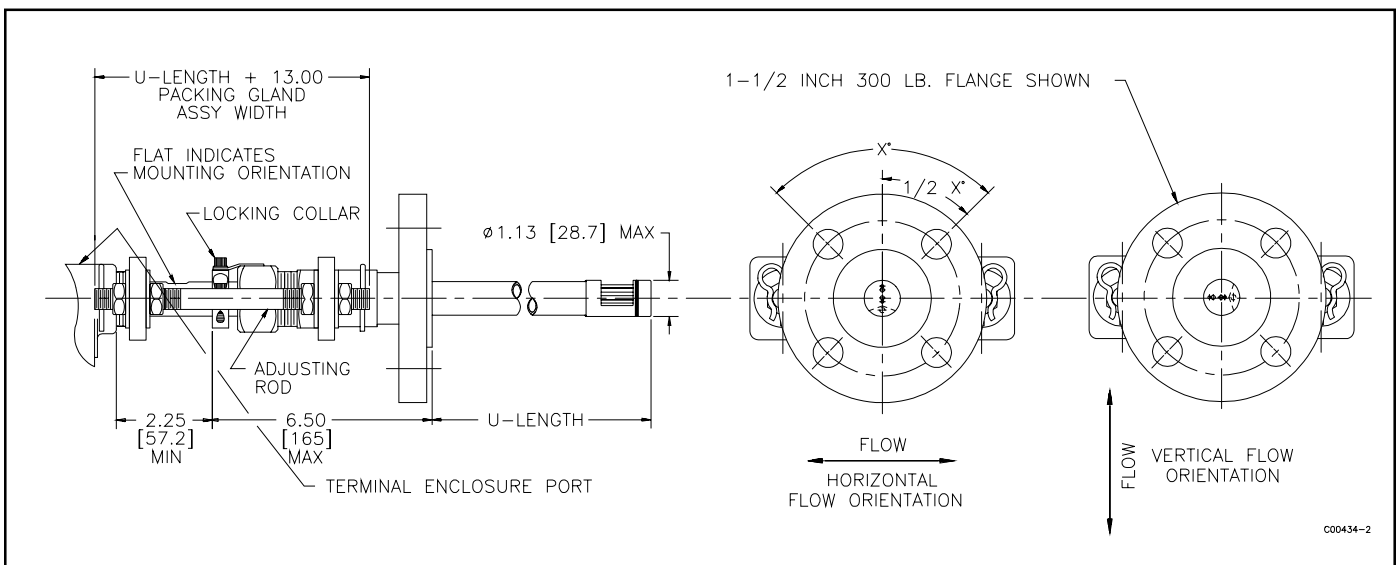


Figure A-6. GF90 Flanged Medium Pressure Packing Gland Flow Element

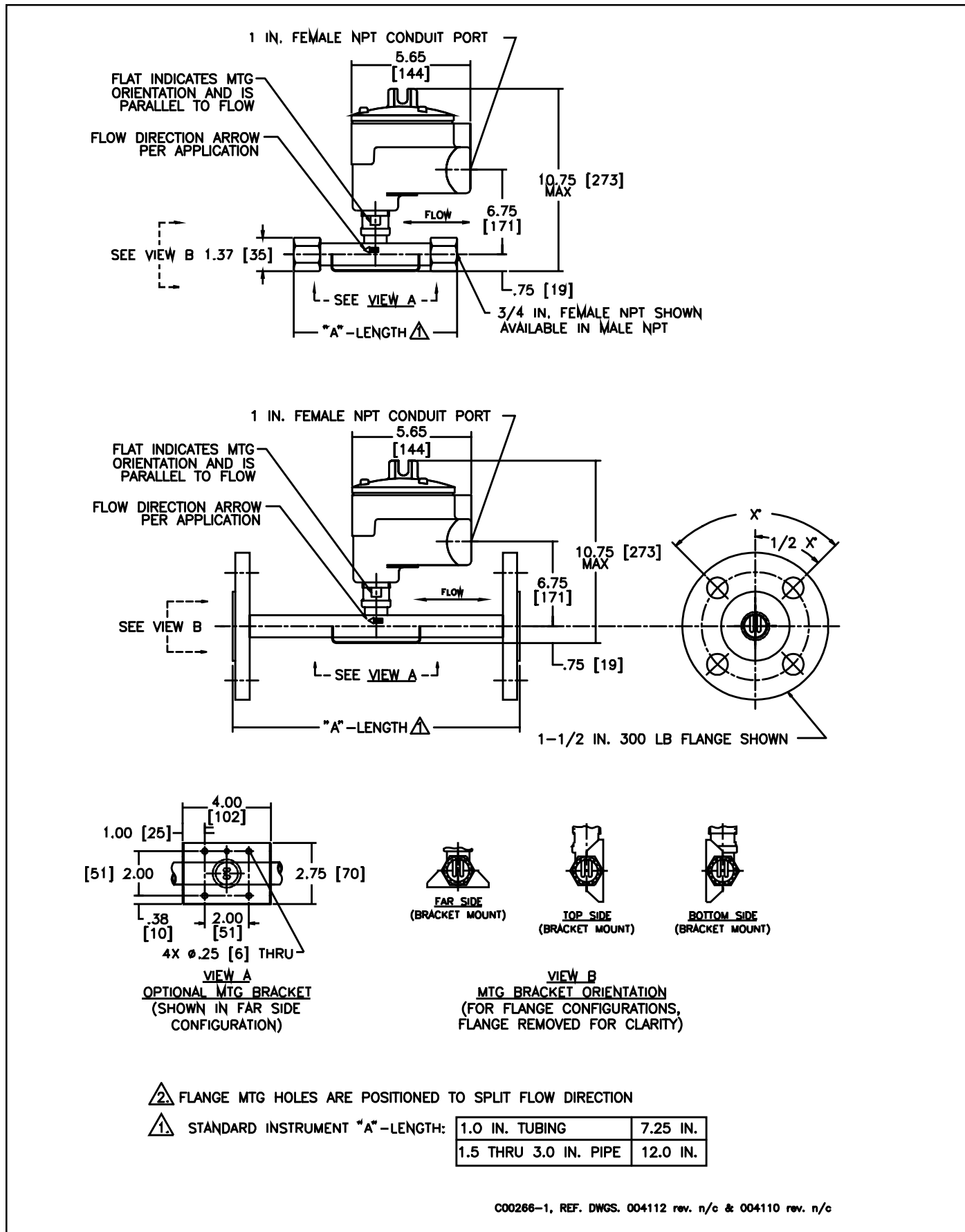


Figure A-7. GF92 NPT and Flanged Flow Element Configurations

Inches [mm]

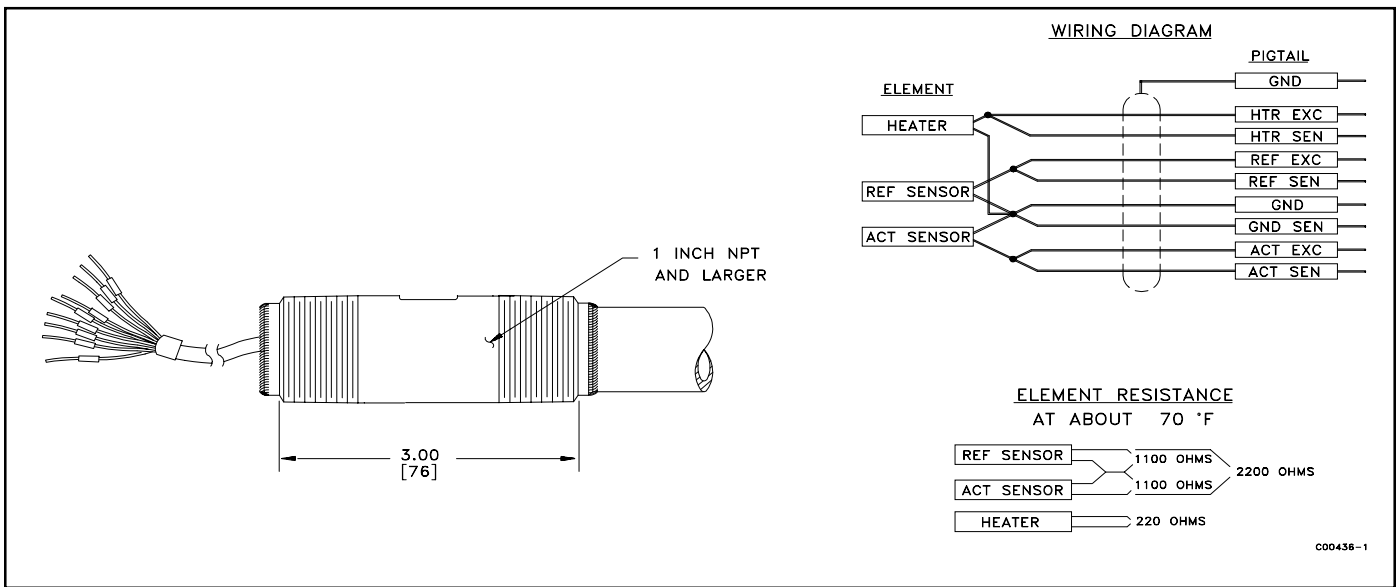


Figure A-8. GF90 and GF92 Pigtail Configuration

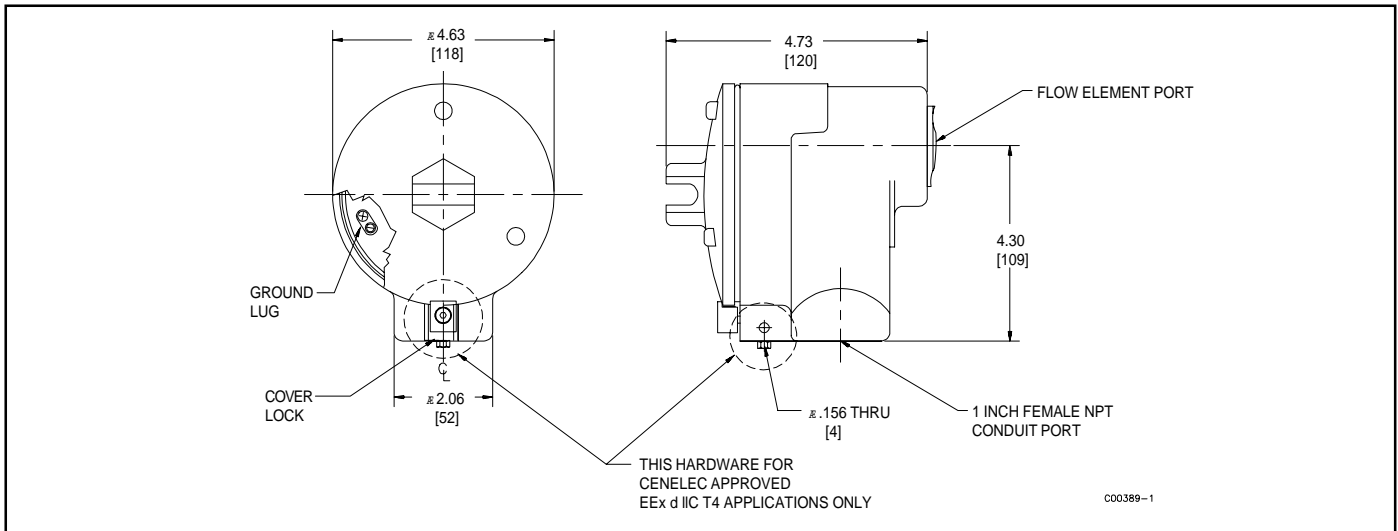


Figure A-9. Local Enclosure NEMA Type 4X and 7 Hazardous Location (Aluminum and 300 series stainless steel enclosures shown. Feraloy enclosures are slightly smaller)

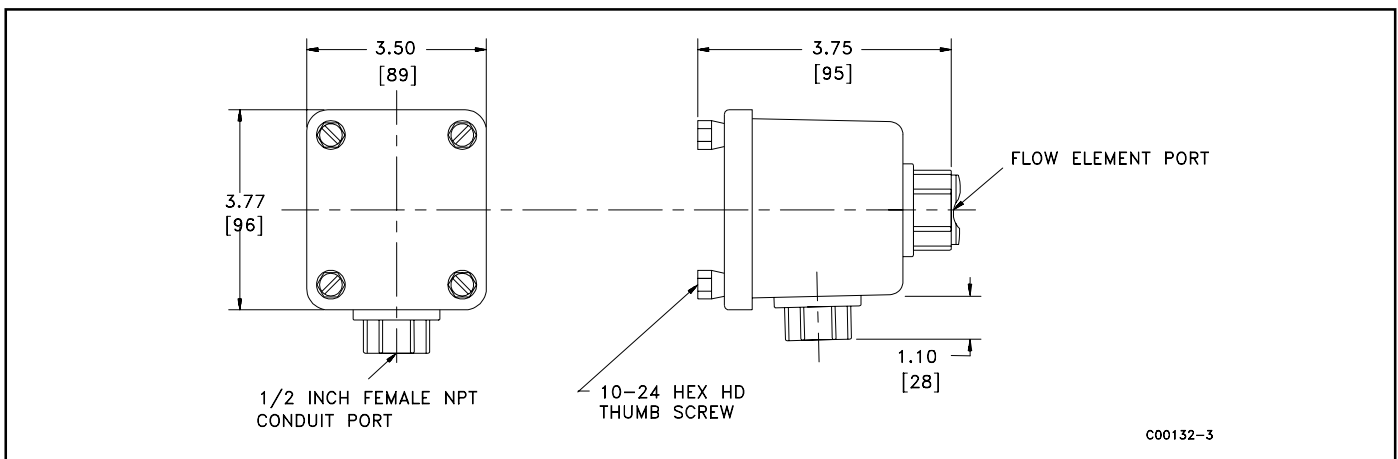


Figure A-10. Local Enclosure NEMA Type 4X (Fiberglass)

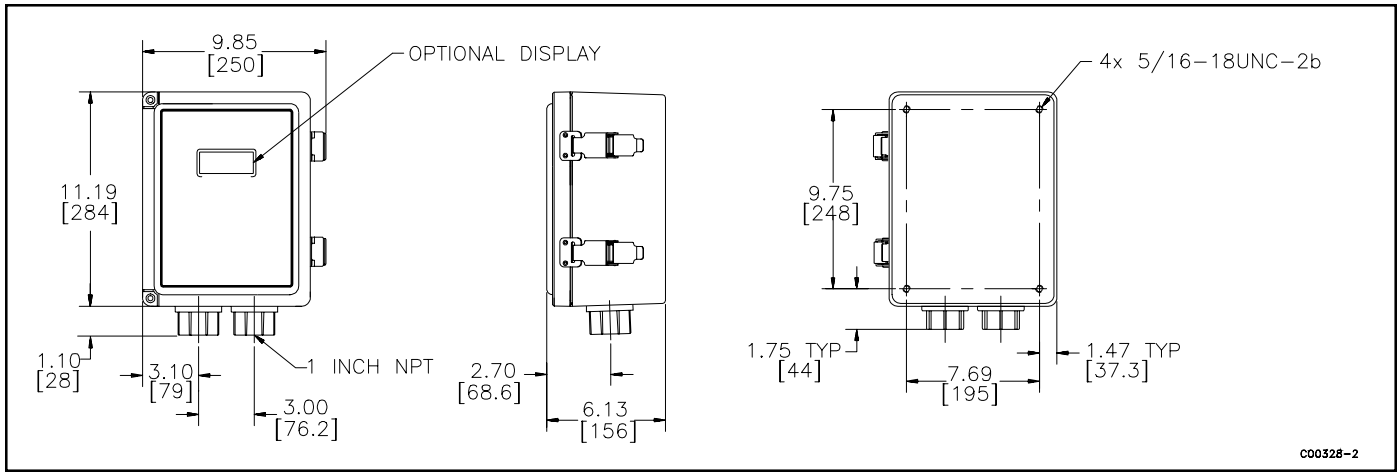


Figure A-11. Remote Enclosure NEMA Type 4X (Fiberglass)

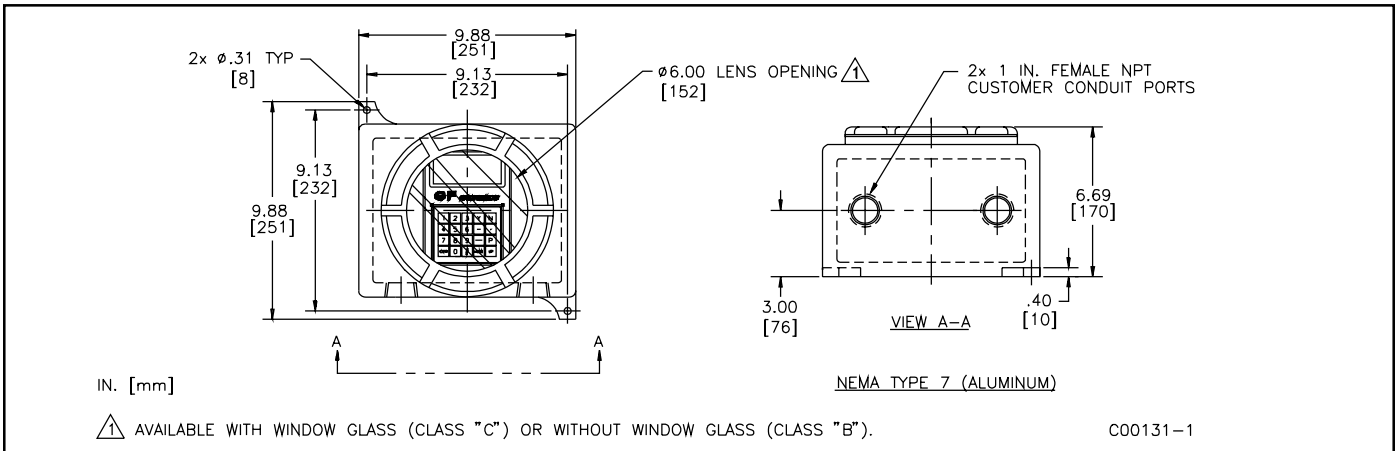


Figure A-12. Remote Enclosure NEMA Type 7 (Aluminum)

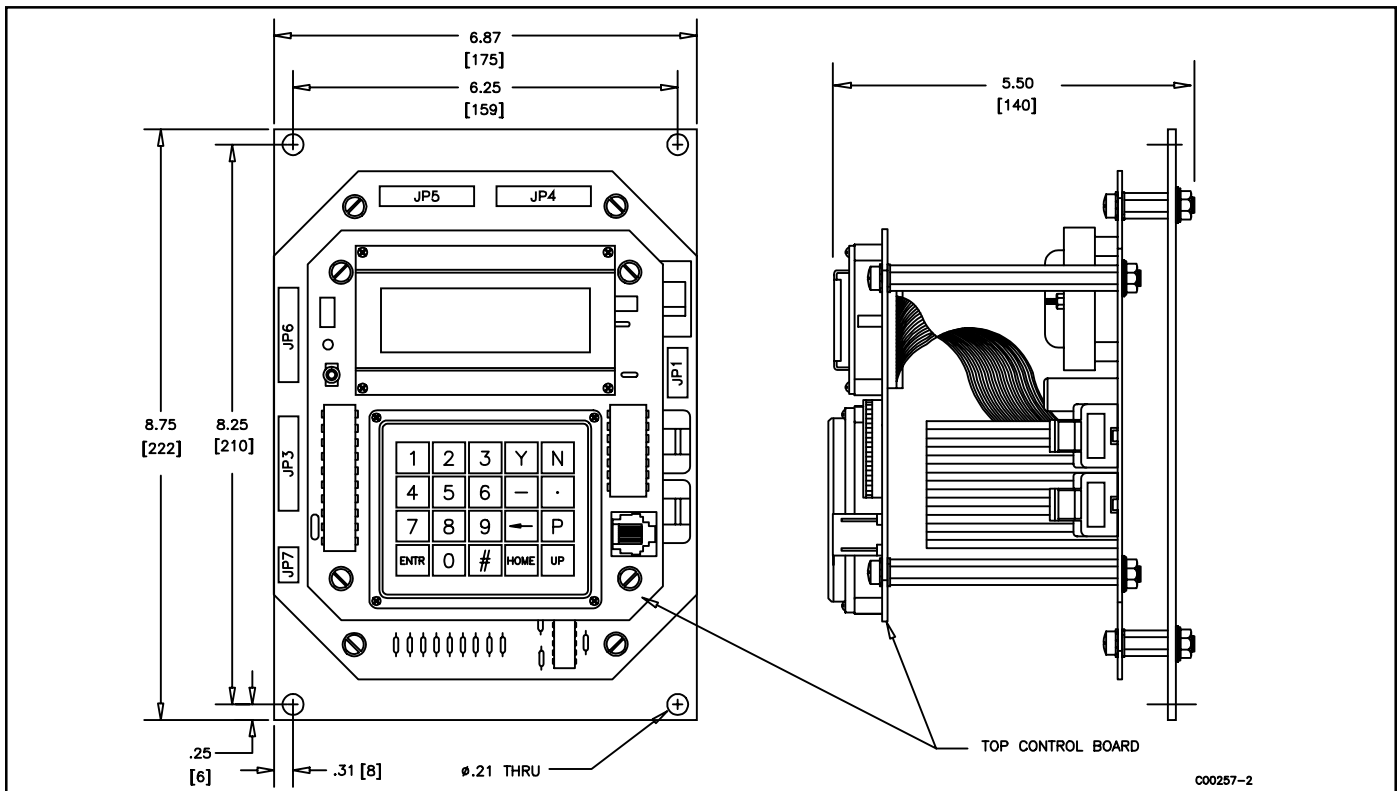


Figure A-13. Flow Transmitter Configuration With Panel Assembly

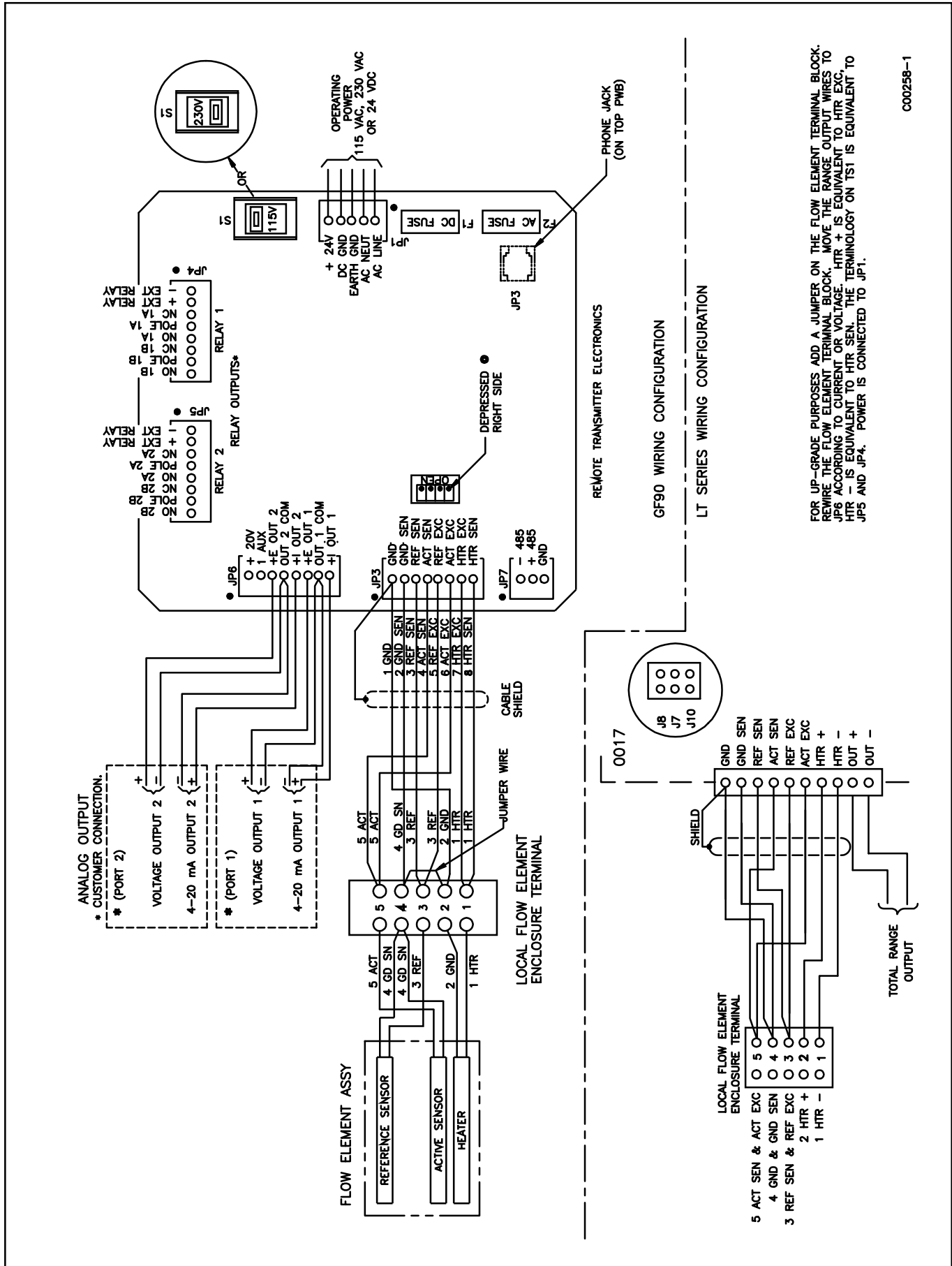


Figure A-14. LT Series Upgrade